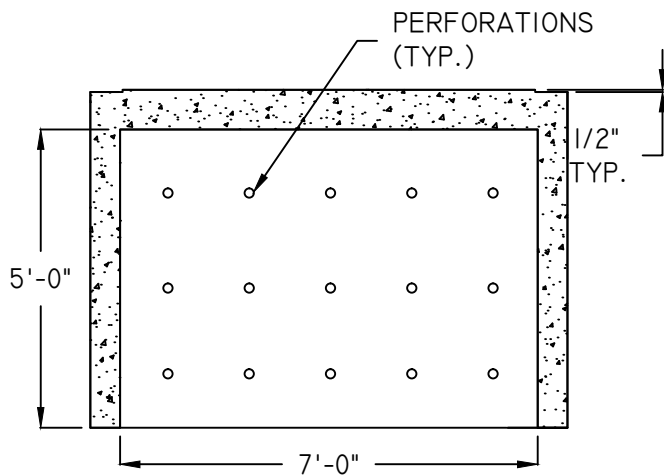


WINDOW

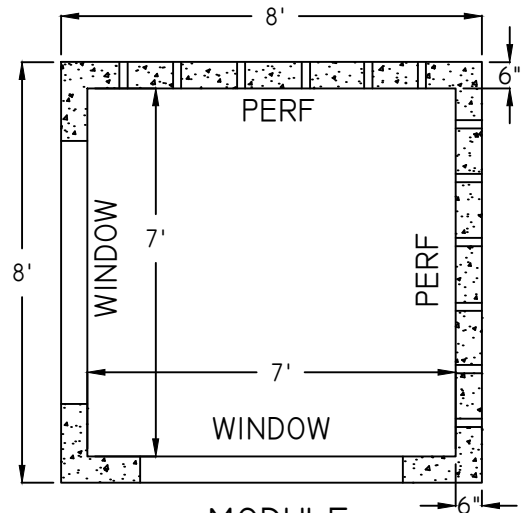
INSIDE DIMENSION	CAPACITY		WEIGHT (LBS)
	(GAL)	(CU FT)	
2'	829	106.50	9,657
2.5'	1,056	133.83	10,358
3'	1,283	161.17	11,057
3.5'	1,510	188.50	11,757
4'	1,737	215.83	12,458
4.5'	1,964	243.17	13,157
5'	2,190	270.50	13,857

DESIGN NOTES:

1. CONCRETE - 5,000 PSI, 28 DAYS
2. REINFORCING STEEL CONFORMS TO LATEST ASTM A615 AND A82 OR A185 SPECS.
3. H-20 DESIGN LOADING PER AASHTO HS-20-44



PERFORATED WALL



MODULE SCHEMATIC

MULTI ROW CORNER

(860) 413-3050
www.retain-it.com

retain  **it**
Stormwater Management Systems®

ANY MODIFICATIONS TO THIS DOCUMENT WITHOUT THE WRITTEN CONSENT OF ARROW CONCRETE PRODUCTS SHALL RENDER IT INVALID AND UNUSABLE.